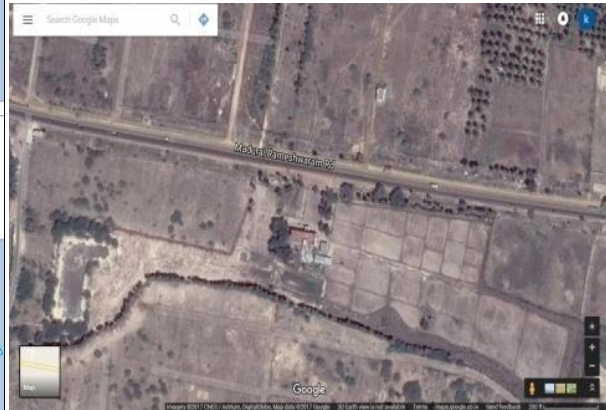


Krishi Vigyan Kendra: RAMANATHAPURAM -2017-18

1. Address of KVK with Phone, Fax and e-mail, Website

1.1	Name and address of KVK with Phone, Fax and e-mail	:	ICAR - Krishi Vigyan Kendra Collectorate Campus Sethupathy Nagar, Ramanathapuram – 623 503 Tamil Nadu Ph. No : 04567- 232639, 230250 Email: ramnadkvk@tnau.ac.in
1.2	Name and address of host organization	:	Tamil Nadu Agricultural University Coimbatore – 641 003. Ph. No. 0422-6611522, 6611352 Fax. No. 0422-6611521
1.3	Year of sanction	:	April 2004
1.4	Website address of KVK and date of last update	www.kvkramnad.org, Sep'2016	



2. Operational area / Cluster villages details Taluk/ Block	Name of cluster villages	Major crops & enterprises	Major problems identified in each crop / enterprise	Proposed type of interventions
Mandapam Nainarkoil	Valanthai Neeravi	Chilli	Yield gap Use of private hybrids	OFT - Assessment of chilli varieties
Bogalur Thirupullani	Muthuchellapuram Malangudi	Cotton	Heavy incidence of mealybug in summer irrigated cotton. Lack of awareness on management of mealybug	OFT-Assessment of management practices for <i>Phenacoccus solenopsis</i> in summer irrigated cotton
Nainarkoil	Manjakollai	Paddy	Non availability of rice varieties tolerant to sodicity. Lesser yield and returns from rice crop	OFT - Assessment of rice varieties tolerant to sodic soils in Ramanathapuram district
Ramanathapuram	Ramanathapuram district	TNAU Mobile Apps	Visiting personally to each and every farmer is difficult Sending SMS is not as real time reception	OFT - Assessment of TNAU Mobile Apps among Farmers Mobile user Group (FMG) of Ramanathapuram district
Nainarkoil	Manjakollai	Paddy	Poor / Under utilization of traditional rice varieties Lack of awareness of the therapeutic properties of traditional rice varieties Limited use of traditional rice varieties	OFT - Assessment of Glycemic responses of traditional paddy varieties
Bogalur	Muthuchellapuram	Paddy	Imbalanced application of fertilizers Low net income	Demonstration of INM practices for semidry rice in Ramnad
Paddy	Deterioration of soil health due to continuous irrigation with poor quality water and buildup of sodicity	FLD – Integrated Management practices for sodic soils		

Chilli	Lack of effective moisture conservation Practices Low Water Use Efficiency	Demonstration of Plastic mulching technology in chilli cultivation			
Nainarkoil	Manjakollai, Chinnaakiramesi, Pandiyur	Bhendi	Lack knowledge in high yielding varieties Yield gap	Demonstration of COBH – 4 bhendi variety	
Nainorkoil	Pandiyur, Manjakollai	Brinjal	Micronutrient deficiency Pest and diseases incidences Low yield	Demonstration of ICM practices in brinjal	

Details of technological interventions

3.1 Technology Assessment S. No.	Crop/enterprise	Title of intervention	Technological options	No. of trials	Total cost (Rs.)	Team members involved
1	Paddy	Assessment of rice varieties tolerant to sodic soils in Ramanathapuram district	FP – ADT 45	5	16000	SMS Soil Science, Agronomy
RP - TRY-3						
AP 1- Gangavathi Sona (GGV-05-01)						
AP 2 - CSR43						
2	Chilli	Assessment of chilli varieties	Farmer practices (FP) (Local variety)	5	13750	SMS Horti., Extension
RP- TNAU Chilli Hybrid CO-1						
AP 1- Arka Harita						
3	Cotton	Assessment of management practices for <i>Phenacoccus solenopsis</i> in summer irrigated cotton	Farmers Practice (FP)	5	7250	SMS PP Agronomy
RP - Spraying of neem oil 3% or NSKE 5% spraying of fish oil rosin soap 25 g/lit / liquid formulation Spraying of Profenofos 50% EC @ 2 ml/lit.						

AP 1 - Spraying of Fish oil rosin liquid 10 ml mixed with neem oil 2 ml/lt Spraying of <i>Lecanicillium lecanii</i> 10 gm/lt or <i>Beauveria bassiana</i> 10 ml/lt Spraying of Thiodicarb 75 WP 5 gm/lt						
4	Paddy	Assessment of Glycemic responses of traditional paddy varieties	FP - IR 20	3	6000	SMS HSc., Agron, Extension
RP – Sithirakaar						
AP 1 - Norungan						
5	TNAU Mobile Apps	Assessment of TNAU Mobile Apps among Farmers Mobile user Group(FMG) of Ramanathapuram district	FP – Existing mode of extension services	20	24000	SMS Extension, Agron, HSc, Horticulture
RP - Providing extension services by installation of crop specific Mobile Apps of TNAU.						
AP 1- Providing extension services through technical message containing leaflets, folders etc.,						
Total		38			67,000	

3.2 Frontline Demonstrations Category/ Crop or enterprise	Prioritized problem	Title of Technology	No. of Demo	Area (ha)/ Units	Total cost (Rs.)	Team members involved
Paddy	Imbalanced application of fertilizers Low net income	Demonstration of INM practices for semidry rice in Ramnad	10	2	8000	SMS Soil Science, Agronomy
Paddy	Deterioration of soil health due to continued irrigation with poor quality water and buildup of sodicity	Integrated Soil Management practices for sodic soils	10	2	12000	SMS Soil Science, Agronomy
Bhendi	Lack knowledge in high yielding varieties Yield gap	Demonstration of COBH – 4 bhendi variety	10	2	21500	SMS Horticulture, Agronomy, PP
Brinjal	Micro-nutrient deficiency, Pest and diseases, Yield gap	Demonstration of ICM practices in Brinjal	10	2	18000	SMS PP Horticulture, Agronomy,
Coriander	Moderate yield and single Harvest (4.82 t/ha), Non adoption of short duration multi harvest variety	Demonstration on Arka Isha variety of Coriander for higher yield	10	2	14500	SMS Horticulture, Agronomy, Plant Protection
Chilli	Lack of effective moisture conservation Practices, Low WUE	Demonstration of Plastic mulching technology in chilli cultivation	5	1	-	SMS Horticulture, Agronomy,
Chilli	Severe incidence of die-back and anthracnose	Demonstration of IDM practices for Chilli diseases	10	2	2500	SMS Plant Protection, Horticulture, Agronomy,

	disease Low marketability. Heavy yield loss.	with special reference to anthracnose				
Chilli	Water scarcity Intermittent drought, Low yield	Demonstrating Drip Irrigation under double paired row planting method	10	2	8000	SMS Horticulture, Agronomy,
Brinjal	Desi variety susceptible to BSFB. Indiscriminate use of insecticide for managing BSFB Yield loss.	Demonstration of IPM practices for brinjal shoot and fruit borer	10	2	12000	SMS Horticulture and Plant Protection
Fodder maize	Non availability of green fodder throughout the year Drought situation Poor milk yield	Demonstration and Training on Enriched Fodder Production Technology(silage making) in Ramanathapuram District	5	2	15500	SMS Agronomy, Home Science
Cotton	Labour Shortage Lower output by manual harvest	Demonstration of cotton plucker	10	2	7000	SMS Home Science, Agronomy
Paddy	Pest incidence due to poor storage facility. Lack of knowledge on new technology	Demonstration of SUPER GRAIN BAG to store paddy grains	10	2	5000	SMS Home Science, Agronomy
Total			110	21	1,24,000	

4. Target for mandated activities for the year 2017-18

S.	Activities	Target (2017-18)
1.	On- farm trials (No. of technologies)	5
2.	Frontline Demonstrations (No.)	12
3.	Training of Farmers (Participants) Nos.	1300
4.	Training of Extension Personnel (Participants in Nos.)	150
5.	Participants in Extension activities (in lakh)	0.40
6.	Production of Seed (in quintal)	-
7.	Planting material (Nos.)	10000
8.	Live-stock strains/ fingerlings (Nos)	-
9.	Kisan Mobile Advisory (KMA) (lakh farmers)	0.30
10.	Soil and Water Testing (samples in Nos)	100

5. Special Activities (NMOOP, NFSM, Skill Development, FFS, IFS, EDP etc.)

Activity or Programme	Physical details (no. of programmes, participants, area etc.)	Financial outlay (Rs.lakh)	Team members involved
FFS on ICM in Jasmine	No. of classes: 14 No. of Participants:20	0.30	All SMS
Integrated Farming System	3 Units	0.30	All SMS
Entrepreneurship development in value addition of millets (EDP)	Hands on training on value addition in millets at KVK, Ramanathapuram Exposure visit cum training at HC& RI, Madurai Exposure visit cum training at IICPT, Tanjore Exposure visit cum training at PHTC, Coimbatore	2.27	All SMS
Sea weed cultivation	Sea Weed Cultivation, Processing and Marketing for additional income generation to improve the economic status of coastal village community	1.00	All SMS

6. Externally funded Activities (continuing / expected during 2017-18):

Activity or Programme	Program duration	Funding agency	Physical details (no. of programmes, participants, area etc.)	Financial outlay (Rs. lakh)	Team members involved
Pre <i>Kharif</i> 2017	One day	ICAR	500 Farmers	0.80	All SMS
Pre Rabi 2017-18	One day	ICAR	500 Farmers	0.80	All SMS
World soil day	One day	ICAR	100 Farmers	0.50	All SMS

7. SAC meeting month: September 2017